

LANE RESTRICTIONS

Arrivals Level South Knuckle

Wednesday, September 9 through Wednesday, September 30, 2020
 Nightly, Monday through Friday: 12AM to 7AM





ACTIVITY

To prepare for future vault installation, the Automated People Mover project will restrict three Arrivals Level Outer Lanes at the South Knuckle beginning Wednesday, September 9 through Wednesday, September 30, nightly from 12AM to 7AM (Monday through Friday nights only).

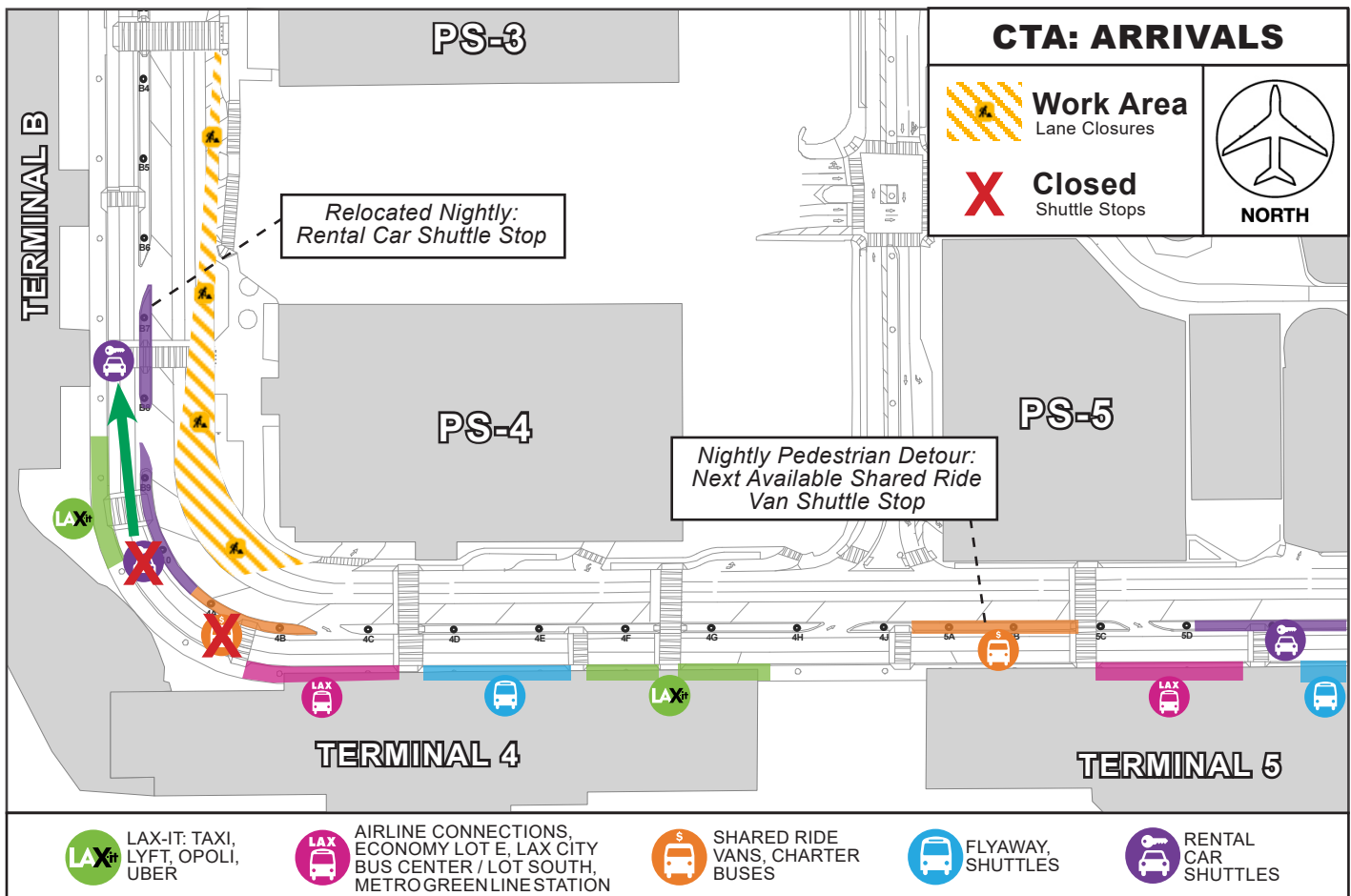
IMPACTS

RESTRICTED NIGHTLY:

- Arrivals Level Outer Lanes 1, 2 and 3 between Terminal B and Terminal 4
- 
 • Relocated: Rental Car Shuttle Stop between Terminal B and Terminal 4
 - Signage will be in place directing guests to the relocated Rental Car stop at Terminal B
- 
 • Closed: Shared Ride Van Shuttle Stop between Terminal B and Terminal 4
 - Signage will be in place directing guests to the next available Shared Ride Van stop at Terminal 5

MAINTAINED:

- CTA through traffic will be maintained at all times via the Pick-Up Lane at the South Knuckle
- Parking Structure 4 access will be maintained at all times
- Inner Lane shuttle operations (LAX-it, FlyAway & LAX Shuttles) will be maintained at all times



LAX Construction Hotline: 310-649-5292 | [@FlyLAXAirport](https://twitter.com/FlyLAXAirport) | [f LAInternationalAirport](https://www.facebook.com/LAInternationalAirport)
LAXConstructionHotline@LAWA.org