

LANE RESTRICTIONS

Arrivals Level - Terminal 5.5

Monday, September 21 through Friday, October 9; Nightly from 12AM to 8AM



ACTIVITY:

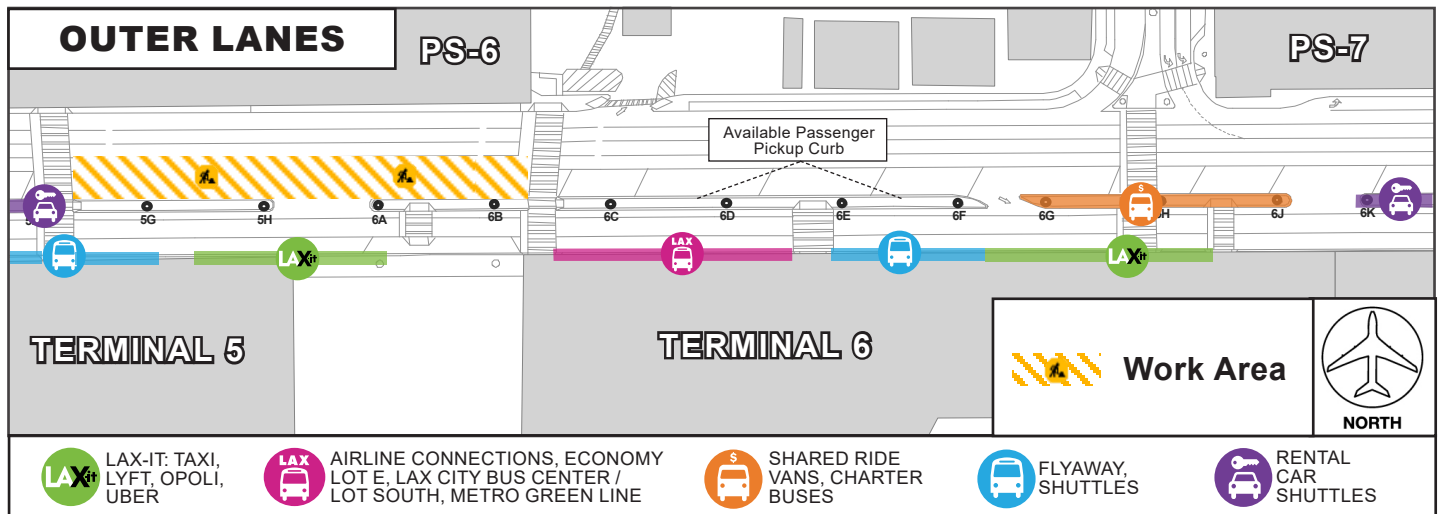
To facilitate utility work for the Terminal Cores and APM Interface Project, Arrivals Level Inner or Outer Lanes between Terminals 5 and 6 will be restricted nightly from 12AM to 8AM per the following schedule:

- **SEPTEMBER 21 - SEPTEMBER 25:** Outer Lanes
- **SEPTEMBER 28 - OCTOBER 9:** Inner Lanes Or Outer Lanes

During all closures, vehicular and pedestrian traffic will be maintained at all times via detours. Signage will be posted, including for temporarily relocated shuttle stops.

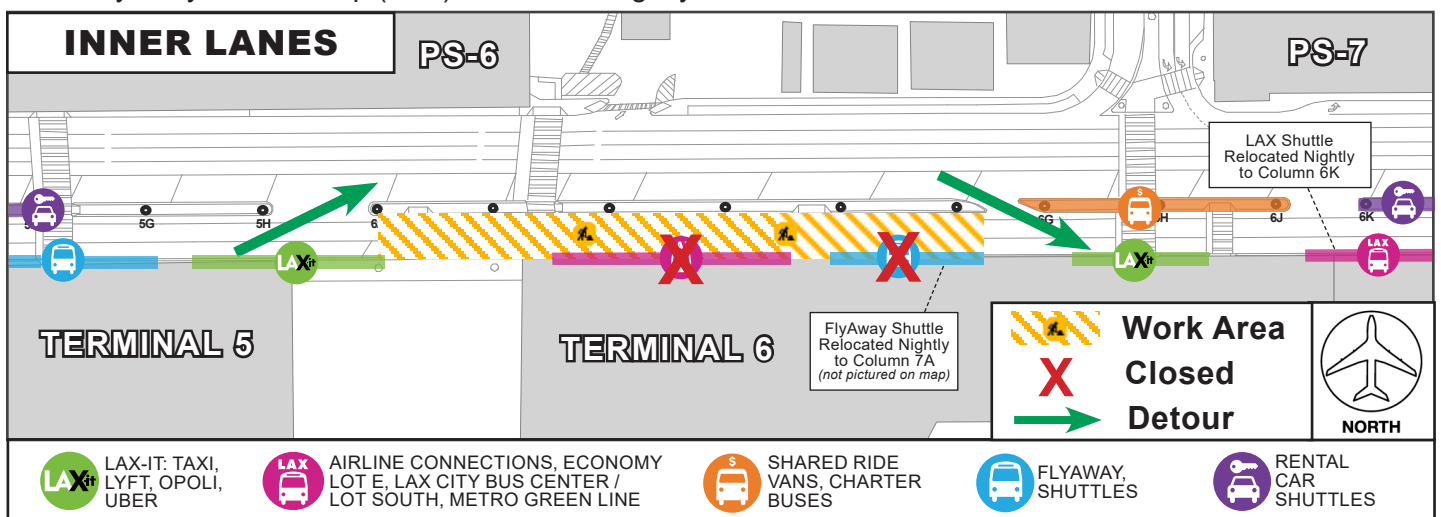
OUTER LANE CLOSURES:

- One Arrivals Level Outer Lane and Passenger Pickup between Columns 5F and 6B



INNER LANE CLOSURES:

- Arrivals Level Inner Lanes and Shuttles between Columns 6A and 6F
- LAX Shuttle Stop (pink): Relocated nightly to Column 6K
- FlyAway Shuttle Stop (blue): Relocated nightly to Column 7A



LAX Construction Hotline: 310-649-5292 | @FlyLAXAirport | LAInternationalAirport

LAXConstructionHotline@LAWA.org

C.A.L.M.

Coordination and Logistics Management Team