

INNER LANE & SHUTTLE STOP CLOSURES

Arrivals Level - Terminal 1.5

Monday, August 26 through Monday, September 9, 2019
Monday through Friday, Nightly: 12:30AM to 6:30AM



ACTIVITY

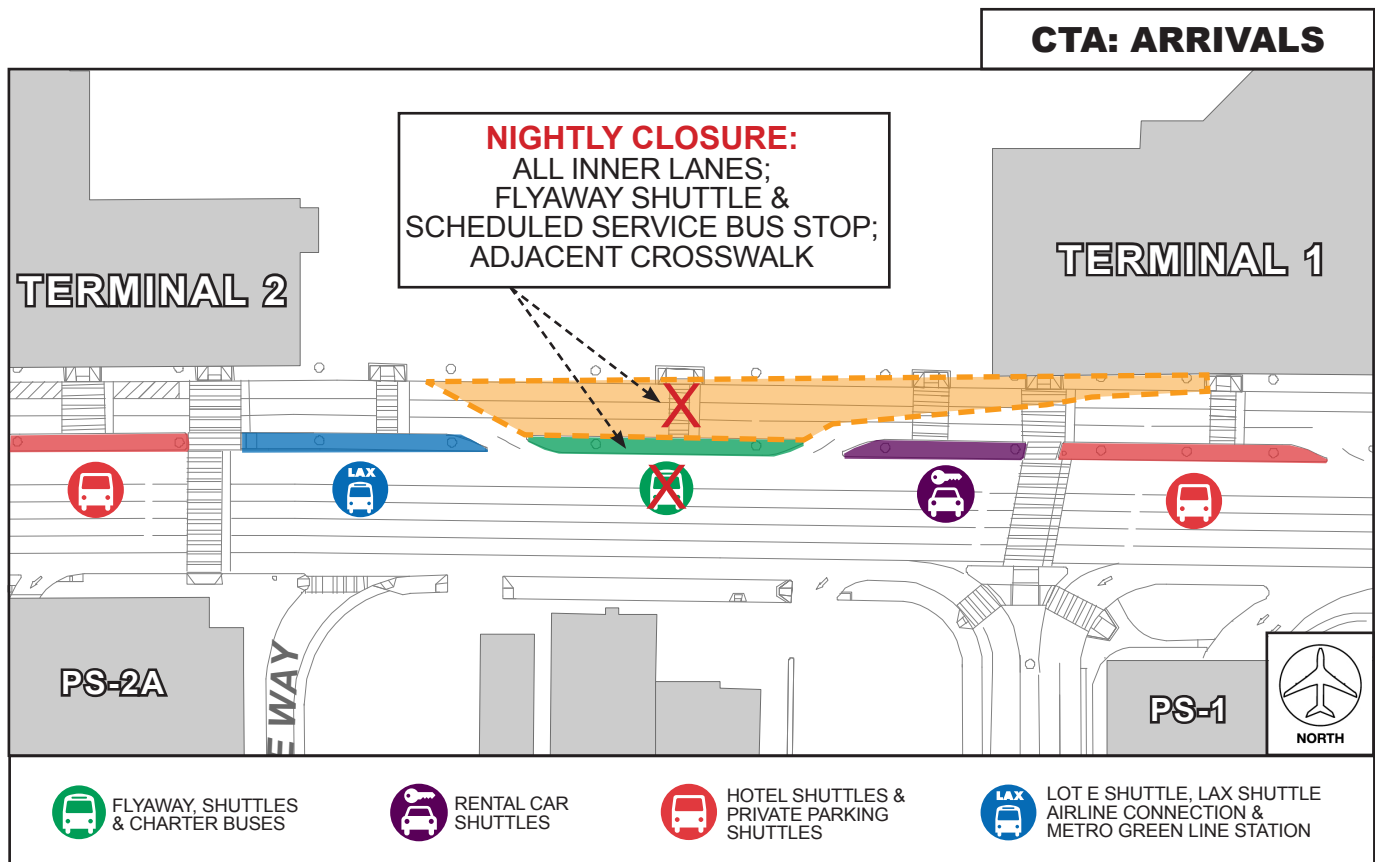
All Arrivals Level inner lanes, the shuttle stop and adjacent crosswalk at Terminal 1.5 will be restricted nightly Monday, August 26 through Monday, September 9, Monday through Friday only from 12:30AM to 6:30AM, to facilitate the replacement of an underground waterline by the LAWA Utilities and LAMP Enabling Project (LULEP). Detour signage will be in place.

IMPACTS CLOSED

- All Arrivals Level inner lanes at Terminal 1.5 (area between Terminal 1 and Terminal 2) between Columns 2A and 2C
- FlyAway Shuttle / Scheduled Service Bus Stop and adjacent crosswalk at Terminal 1.5
 - Signage will be posted to guide pedestrians to next available shuttle stop

OPEN

- Sidewalk will remain open at all times
- Access will be maintained at all times from the Terminals to the Parking Structures



LAX Construction Hotline: 310-649-5292 | @FlyLAXAirport | LAInternationalAirport
LAXConstructionHotline@LAWA.org