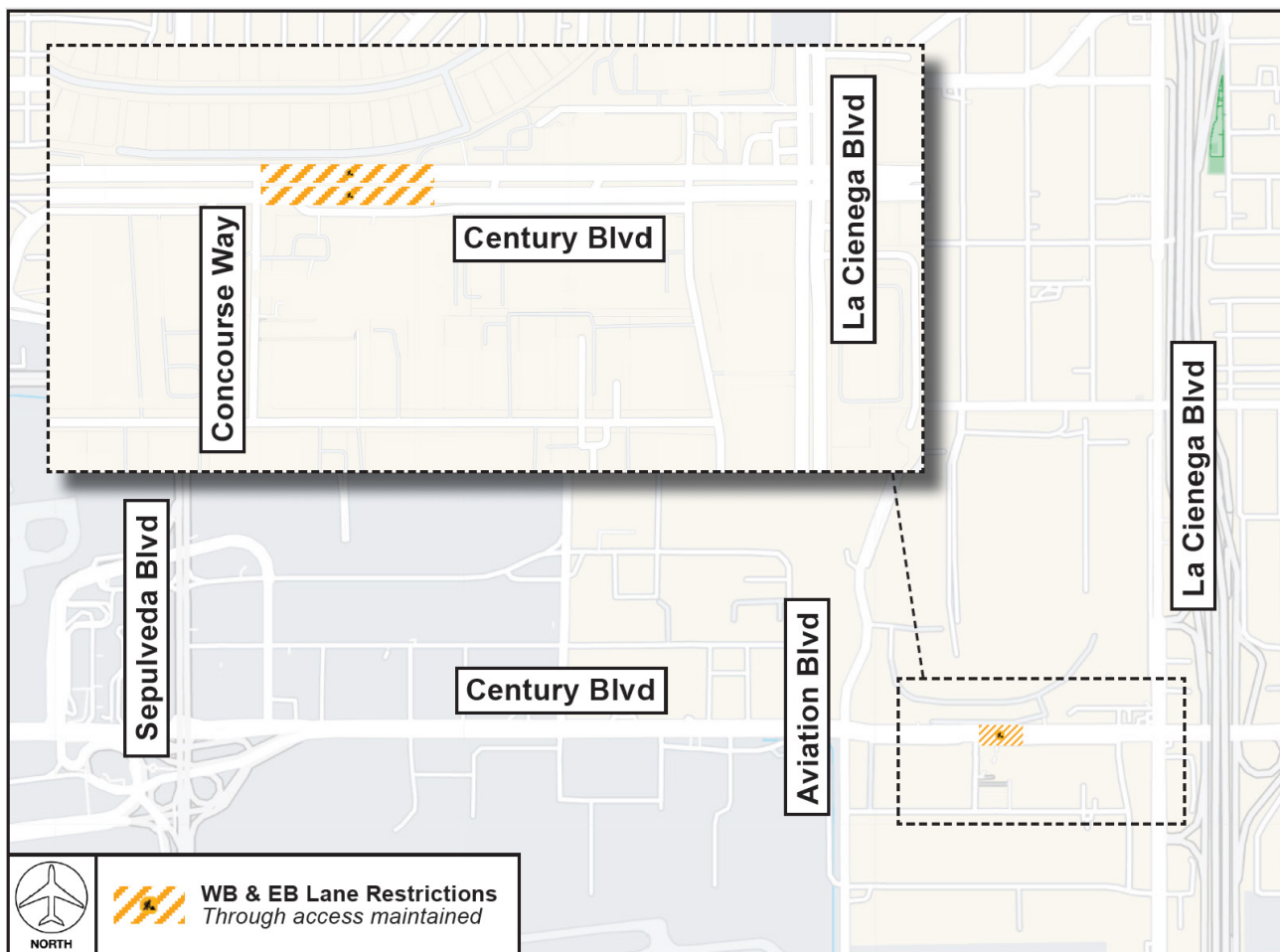


CONSTRUCTION HOT TOPICS

#1 CENTURY BOULEVARD LANE RESTRICTIONS

NIGHTLY LANE RESTRICTIONS THAT HAVE BEEN IN PLACE ON WEST- AND EASTBOUND CENTURY BLVD BETWEEN LA CIENEGA BLVD AND AVIATION BLVD (TO FACILITATE WORK FOR THE LANDSIDE ACCESS MODERNIZATION PROGRAM) ARE SCHEDULED TO BE COMPLETE FRIDAY, OCTOBER 20



PLEASE NOTE:

Vehicular & pedestrian traffic is being maintained at all times, including access to local businesses, while restrictions are in place



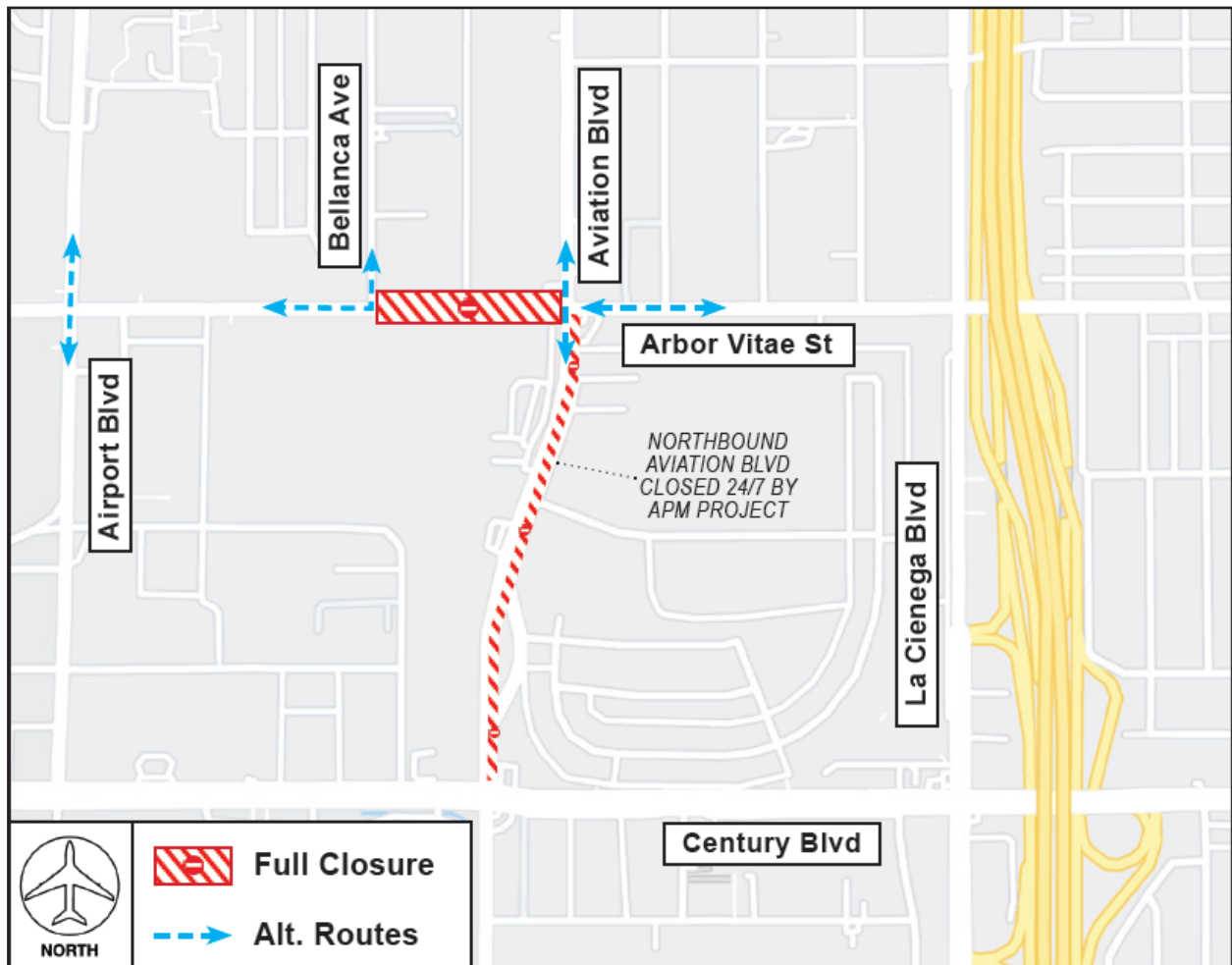
📞 LAX Construction Hotline: 310-649-5292 ✉️ LAXConstructionHotline@LAWA.org
flyLAX.com 🐦 @flyLAXairport 🌐 LAInternationalAirport

CONSTRUCTION HOT TOPICS

#2

ARBOR VITAE ST SCHEDULED CLOSURE

TO FACILITATE ROADWAY WORK FOR THE CONSOLIDATED RENT-A-CAR FACILITY, A CONTINUOUS (24/7) FULL CLOSURE OF ARBOR VITAE ST BETWEEN BELLANCA AVE AND AVIATION BLVD IS SCHEDULED TO TAKE PLACE MONDAY, OCTOBER 16 AT 8PM THROUGH SATURDAY, DECEMBER 16 AT 6AM.



PLEASE NOTE:

Northbound Aviation Blvd between Century Blvd and Arbor Vitae St is closed 24/7 by the APM project. Southbound Aviation Blvd traffic is maintained at all times.



☎ LAX Construction Hotline: 310-649-5292 ✉ LAXConstructionHotline@LAWA.org
flyLAX.com 🐦 @flyLAXairport 🌐 LAInternationalAirport

CONSTRUCTION HOT TOPICS

#3

SCHEDULED 24/7 CTA LANE RESTRICTIONS

PLEASE NOTE:

This map only reflects 24/7 continuous lane closures in the CTA; other nightly lane closures / sidewalk restrictions may be in place to facilitate construction activities

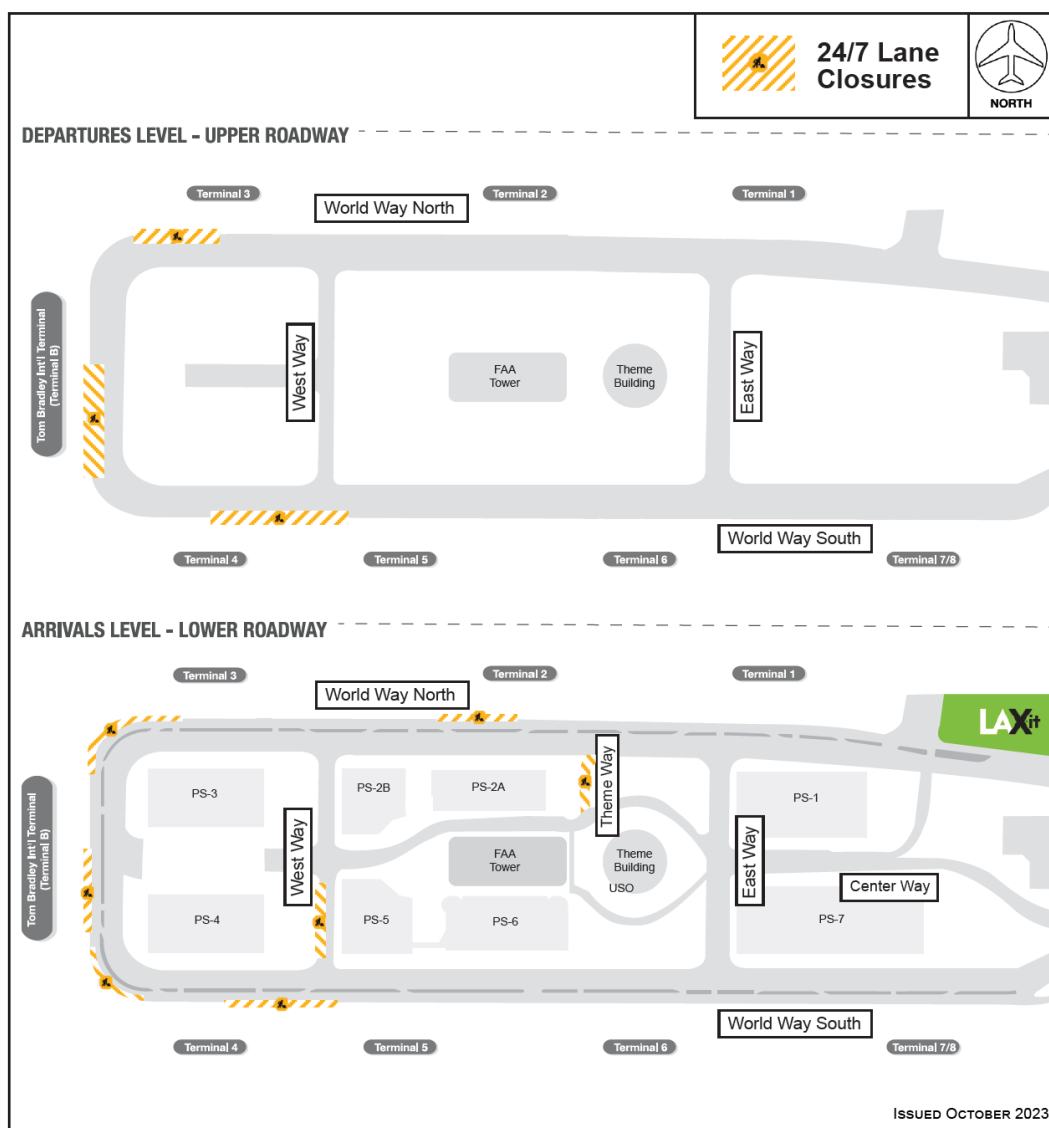
ACCESS MAINTAINED:

Traffic around the Central Terminal Area will be maintained at all times, as well as access to passenger pick-up and drop-off

PLAN AHEAD:

Motorists should plan ahead for potential delays

THE MAP BELOW IS A COLLECTIVE
SNAPSHOT OF ALL SCHEDULED 24/7 LANE
RESTRICTIONS FOR CTA DEPARTURES AND
ARRIVALS LEVEL ROADWAYS FOR THE
MONTH OF OCTOBER 2023



LAX Construction Hotline: 310-649-5292 LAXConstructionHotline@LAWA.org
flyLAX.com @flyLAXairport LAInternationalAirport