

# INNER LANE RESTRICTIONS

## Arrivals Level - Terminal 2

Tuesday, September 24 at 12AM through Monday, October 7, 2019 at 7AM



### ACTIVITY

All Arrivals Level inner lanes at Terminal 2 between Columns 2B and 2K will be closed nightly from 12AM to 7AM beginning Tuesday, September 24 through Monday, October 7, 2019. During the day (7AM to 12AM) two inner lanes will remain closed with one inner lane re-opened. The closure will facilitate concrete restoration of the roadway by the LAWA Utilities and LAMP Enabling Project.

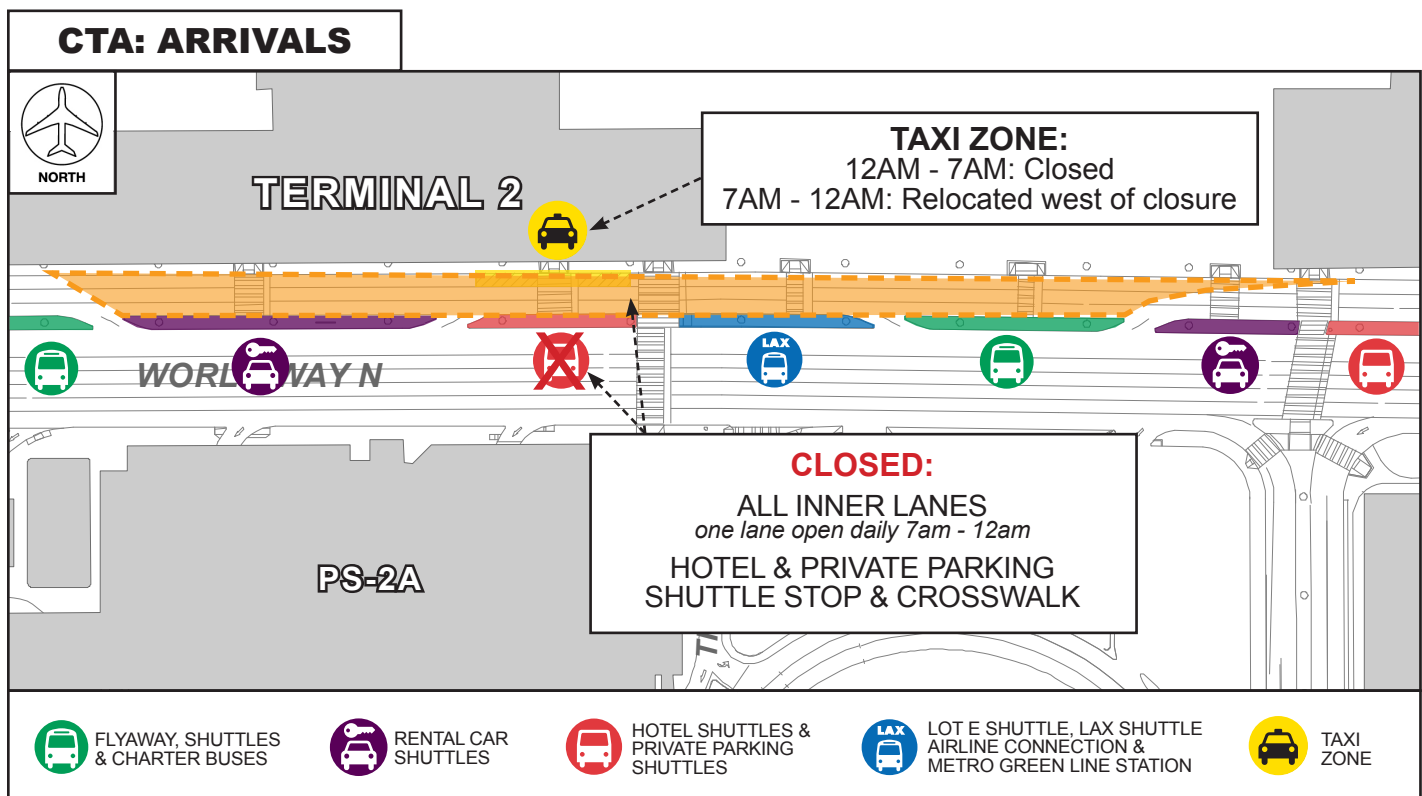
### IMPACTS

#### CLOSED

- Nightly (12AM to 7AM): All Arrivals Level inner lanes at Terminal 2 between Columns 2B and 2K
  - One inner lane will open daily from 7AM to 12AM
- Nightly (12AM to 7AM): Taxi Zone at Terminal 2
  - Taxi Zone will be open daily from 7AM to 12AM and temporarily relocated west of the closure
  - Signage will be posted to guide pedestrians to the relocated Taxi Zone
- Continuous (24/7): Hotel & Private Parking Shuttle Stop and adjacent crosswalk at Terminal 2
  - Signage will be posted to guide pedestrians to next available shuttle stop

#### OPEN

- Sidewalk at Terminal 2 will remain open at all times
- Access will be maintained at all times from the Terminals to the Parking Structures



LAX Construction Hotline: 310-649-5292 | @FlyLAXAirport | LAInternationalAirport  
LAXConstructionHotline@LAWA.org